

**Essential Facilities in the City of
Burlington Affected by a 100 Year Flood
Due to the Removal of the Burlington
Levee**

Figure 1. Essential Facilities in the City of Burlington. Essential facilities include fire stations, hospitals, and other vital business. Notice the depth of flooding near some of these facilities, which may be as high as 13 feet. *Depth is shown in a different format than previous maps.

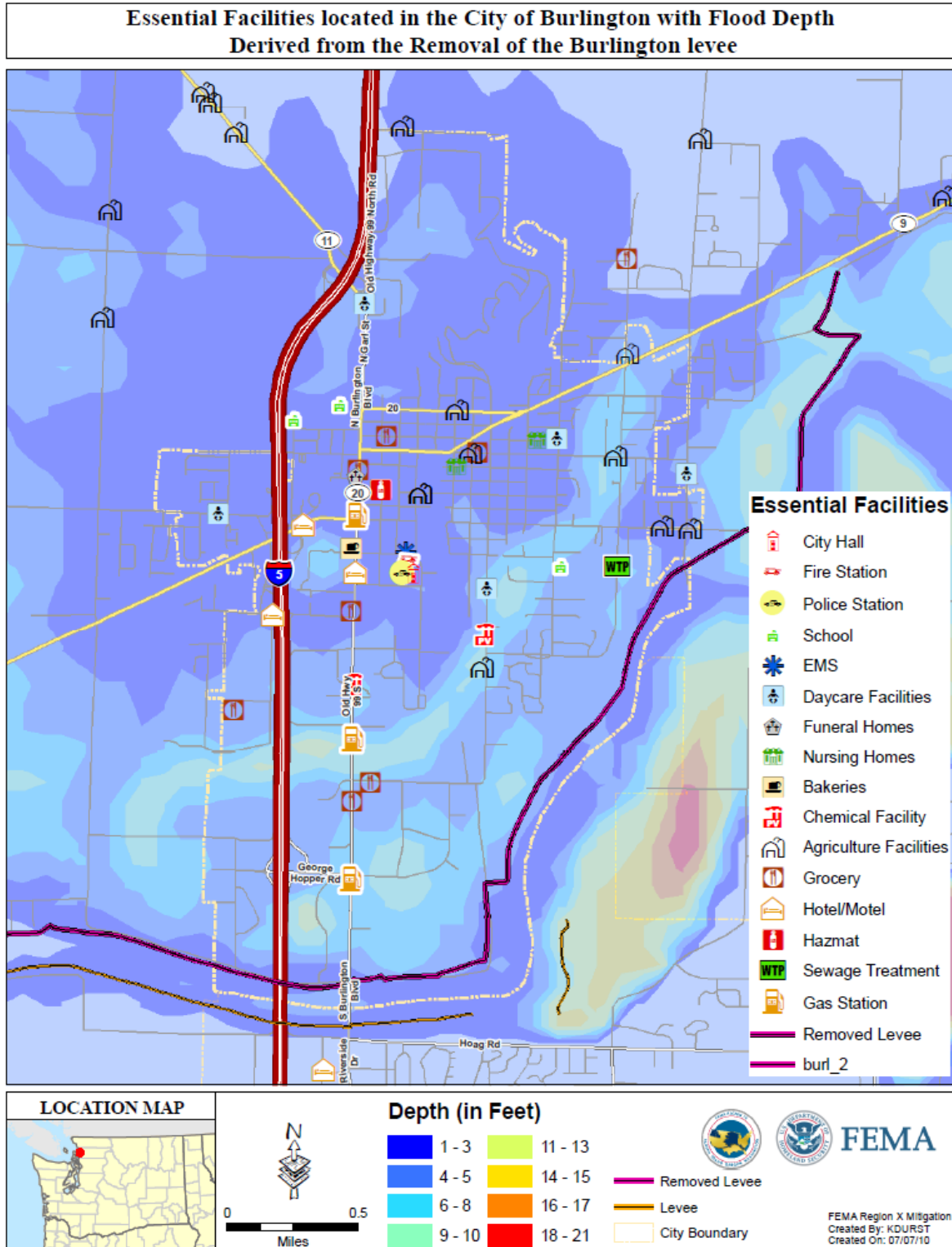


Table 1. Essential facilities and flood depths for City of Burlington

Facility Type	Potential Depth	Facility Type	Potential Depth
Public Health		Schools	
Fire	1-3 feet	High	1-3 feet
EMS	1-3 feet	Elementary	1-3 feet
Child Care	3-6 feet	Elementary	3-6 feet
Child Care	1-3 feet	Manufacturing	
Child Care	3-6 feet	Soft Drink	3-6 feet
Nursing Home	1-3 feet	Bottled Water	3-6 feet
Nursing Home	1-3 feet	Bottled Water	3-6 feet
Nursing Home	1-3 feet	Bakery	7+ feet
Funeral Home	1-3 feet	Dairy	1-3 feet
Agriculture		Chemical	
Poultry	7+ feet	Paint	3-6 feet
Mushrooms	7+ feet	Pesticides	3-6 feet
Livestock	7+ feet	Sewage	1-3 feet
Potatoes	1-3 feet	Gas Station	1-3 feet
Nursery	1-3 feet	Gas Station	7+ feet
Vegetables	3-6 feet	Gas Station	7+ feet
Produce	3-6 feet	Hazmat	1-3 feet