

Fisher Slough Freshwater Tidal Marsh Restoration Project

*A collaborative project between
The Nature Conservancy, Dike
District 3, Drainage District 17,
Skagit County and private
landowners*

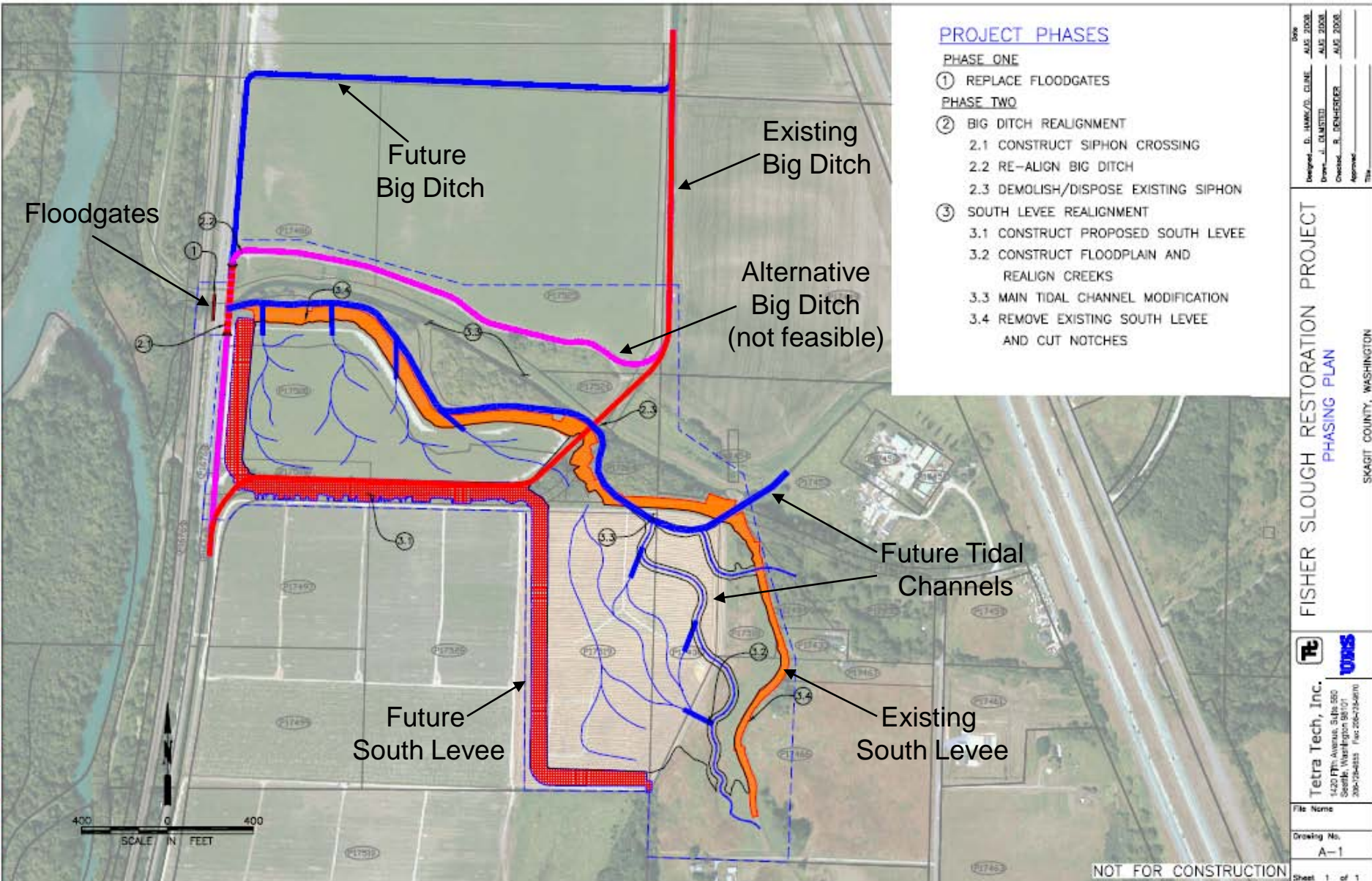


Project highlights:

- Permanently restores 60 acres of estuary
- Provides multiple benefits: critical habitat for Chinook salmon, flood protection for farmland, improved water quality for Puget Sound
- Demonstrates compatibility of conservation and agriculture
- Builds trust among diverse interests: farmers, conservation, government, tribes
- Extensive collaborative scientific & stakeholder review via our Fisher Slough Technical Advisory Committee
- Pilot project for the future of estuary restoration



Fisher Slough Restoration Project Phasing



PROJECT PHASES

PHASE ONE

- ① REPLACE FLOODGATES

PHASE TWO

- ② BIG DITCH REALIGNMENT
 - 2.1 CONSTRUCT SIPHON CROSSING
 - 2.2 RE-ALIGN BIG DITCH
 - 2.3 DEMOLISH/DISPOSE EXISTING SIPHON
- ③ SOUTH LEVEL REALIGNMENT
 - 3.1 CONSTRUCT PROPOSED SOUTH LEVEL
 - 3.2 CONSTRUCT FLOODPLAIN AND REALIGN CREEKS
 - 3.3 MAIN TIDAL CHANNEL MODIFICATION
 - 3.4 REMOVE EXISTING SOUTH LEVEL AND CUT NOTCHES

Date: _____
 Designed: D. JAMES/JO. CLINE AUG. 2008
 Drawn: J. ELBERT AUG. 2008
 Checked: R. LEICHTER AUG. 2008
 Approved: _____
 Title: _____

FISHER SLOUGH RESTORATION PROJECT
 PHASING PLAN
 SKAGIT COUNTY, WASHINGTON



Tetra Tech, Inc.
 1420 7th Avenue, Suite 550
 Seattle, Washington 98101
 206-256-2555 Fax: 206-256-2670

File Name: _____
 Drawing No.: A-1
 Sheet 1 of 1

NOT FOR CONSTRUCTION