

**RESOLUTION NO.** \_\_\_\_\_

**A RESOLUTION RELATING TO REMOVAL OF  
TEMPORARY EMERGENCY TRAINING LEVEE EXTENSION ON COCKREHAM ISLAND**

**WHEREAS**, the Skagit County Board of Commissioners, in response to an imminent flood threat, passed Emergency Resolution #R20050014 in January 2005 which resulted in the Skagit County Department of Public Works carrying out emergency repairs to the Cockreham Island training levee to protect public infrastructure from erosion caused by natural changes to the course of the mainstem Skagit River within its historical channel migration zone; and,

**WHEREAS**, part of the emergency flood response included adding a temporary extension (approximately six hundred [600] lineal feet and accompanying access road) to the downstream end of the existing Cockreham Island training levee; and,

**WHEREAS**, the Cockreham Island training levee's intended purpose is to protect public infrastructure by directing the River's flow away from the public infrastructure; and,

**WHEREAS**, the Cockreham Island training levee is not a flood control structure and does not prevent flooding of properties on Cockreham Island; and,

**WHEREAS**, Cockreham Island is located in the unincorporated portion of Skagit County adjacent to the Skagit River roughly between the Towns of Lyman and Hamilton, situated within the designated floodway of the Skagit River; and,

**WHEREAS**, designated floodways (pursuant to Skagit County Code Chapter 14.34), such as Cockreham Island are extremely hazardous areas due to the velocity of floodwater that carries debris, potential projectiles and erosion potential, and within which encroachments (including new construction and fill) are generally prohibited; and,

**WHEREAS**, the Board signed Resolution R20070501 on October 9, 2007 ordering construction in the floodway be prohibited or restricted to the maximum extent allowable; and,

**WHEREAS**, the emergency (designated per Resolution #R20050014) has since passed and it is necessary to restore the Cockreham training levee to pre-emergency conditions.

**NOW, THEREFORE, BE IT RESOLVED AND HEREBY ORDERED** that:

- 1) The Skagit County Department of Public Works is directed to obtain the regulatory approvals necessary to remove the emergency temporary extension of the Cockreham Island training levee (comprised of approximately six hundred [600] lineal feet located at the downstream end of the existing Cockreham Island training levee and the accompanying access road) and is further directed to restore the site to pre-emergency conditions. See attached aerial maps, Exhibit "A" showing approximate location of existing levee and temporary levee extension and Exhibit "B" showing more detailed project area.

- 2) The Department of Public Works is directed to work with the Skagit River Flood Control Zone District Advisory Committee and local stakeholders to evaluate options for reducing repetitive flood damage and opportunities for salmon habitat restoration on Cockreham Island.
  
- 3) Cockreham Island property owners and residents should be reminded that the Cockreham Island training levee is not a flood control structure, and is not designed or intended to prevent flooding of properties on Cockreham Island. Accordingly, properties remain subject to considerable risk from hazardous conditions during high water/flooding events.

PASSED this 19 day of May, 2008.



BOARD OF COUNTY COMMISSIONERS  
SKAGIT COUNTY, WASHINGTON

Don Munks  
DON MUNKS, Chairman

Kenneth A. Dahlstedt  
KENNETH A. DAHLSTEDT, Commissioner

Sharon D. Dillon  
SHARON D. DILLON, Commissioner

Approved as to Content:

By: [Signature]  
Department Head

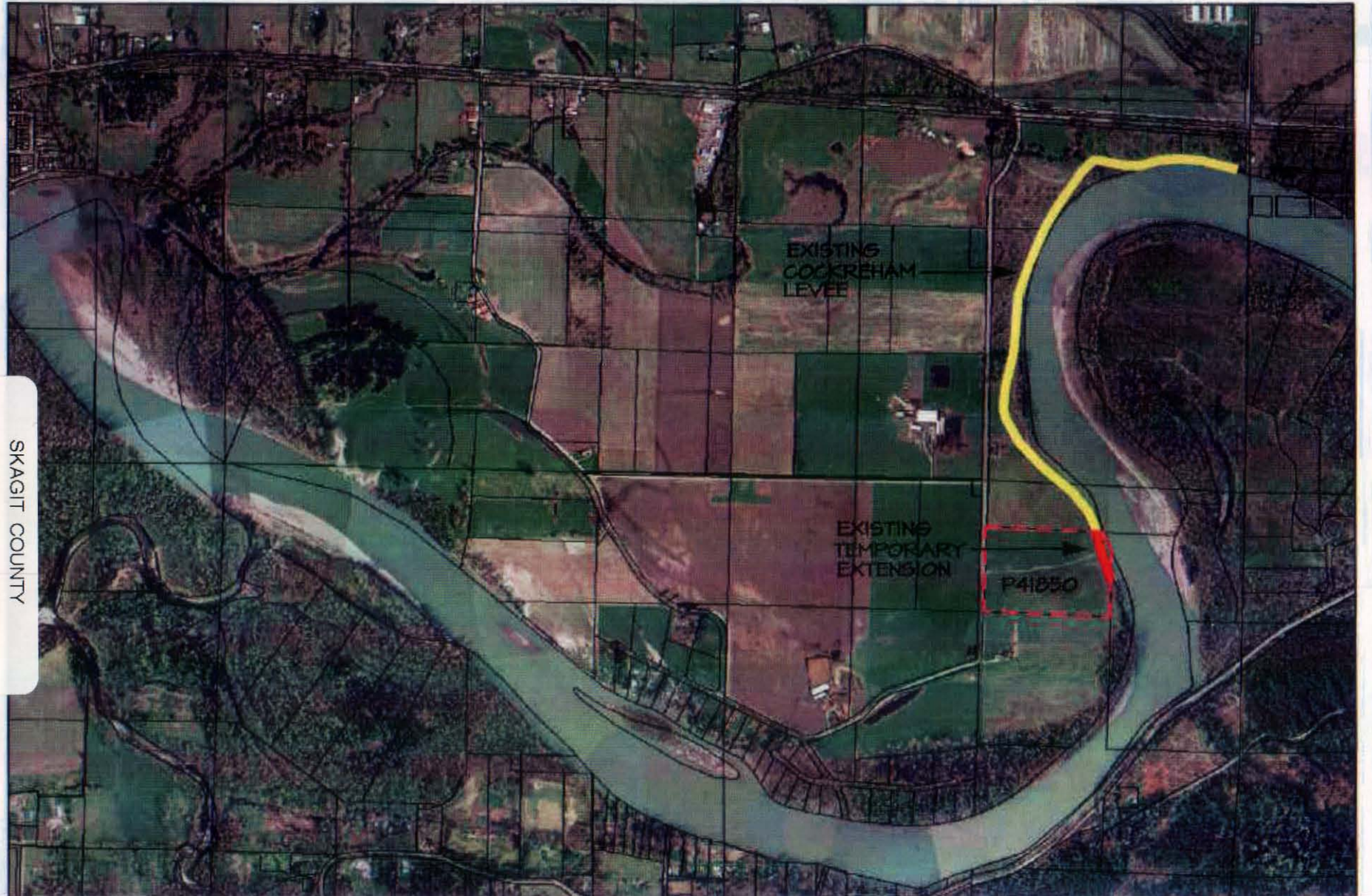
Approved as to Form:

By: [Signature]  
Deputy Prosecuting Attorney

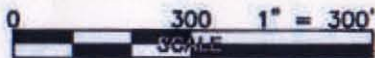
Attest:

By: Linda Hanman, Assistant  
Clerk of the Board

EXHIBIT "A"

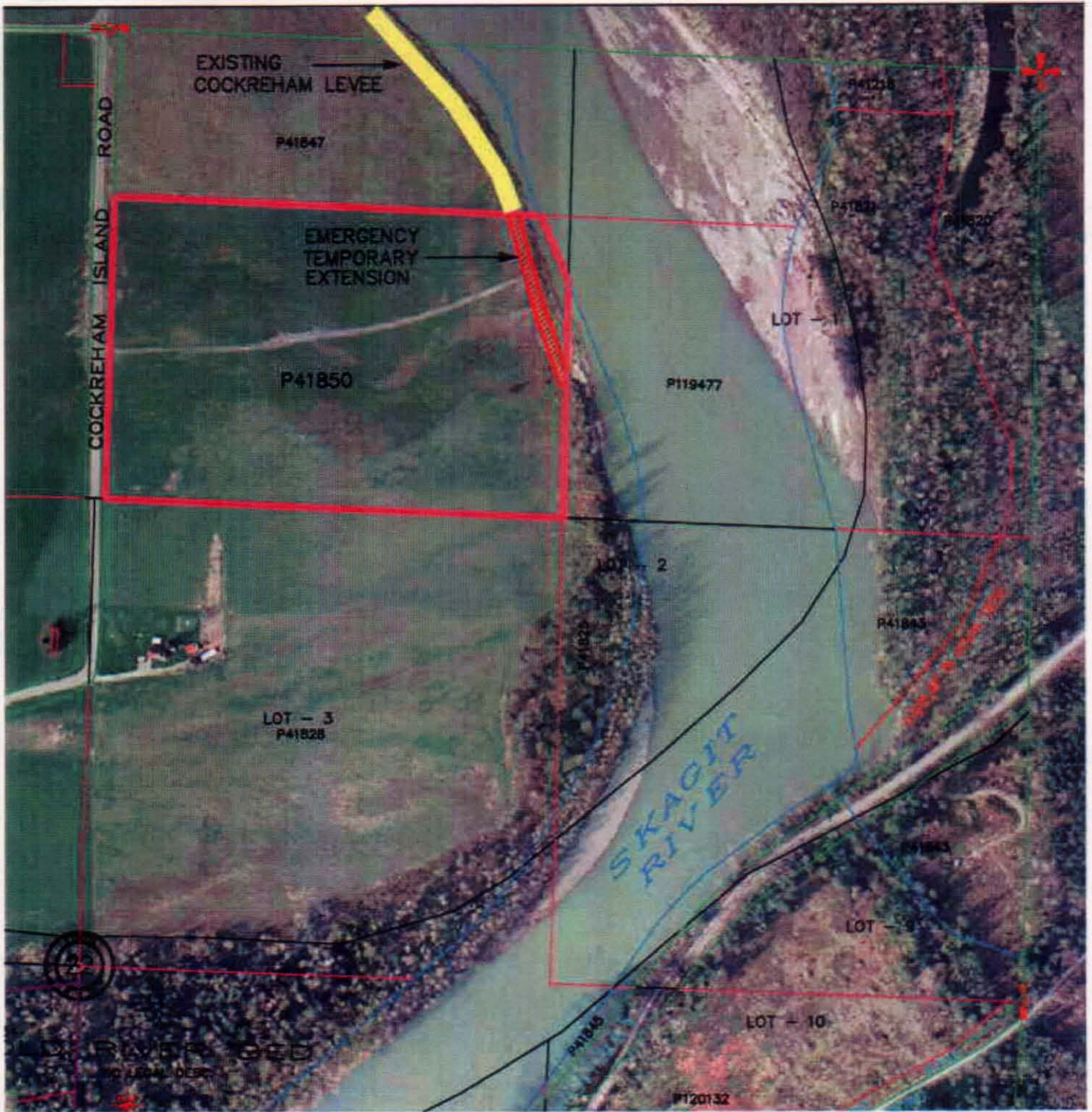


SKAGIT COUNTY  
Resolution # R20080250  
Page 3 of 4



COCKREHAM ISLAND  
EMERGENCY TEMPORARY EXTENSION  
REMOVAL PROJECT

# EXHIBIT "B"



## COCKREHAM ISLAND EMERGENCY TEMPORARY EXTENSION REMOVAL PROJECT

SKAGIT COUNTY  
Resolution # R20080250