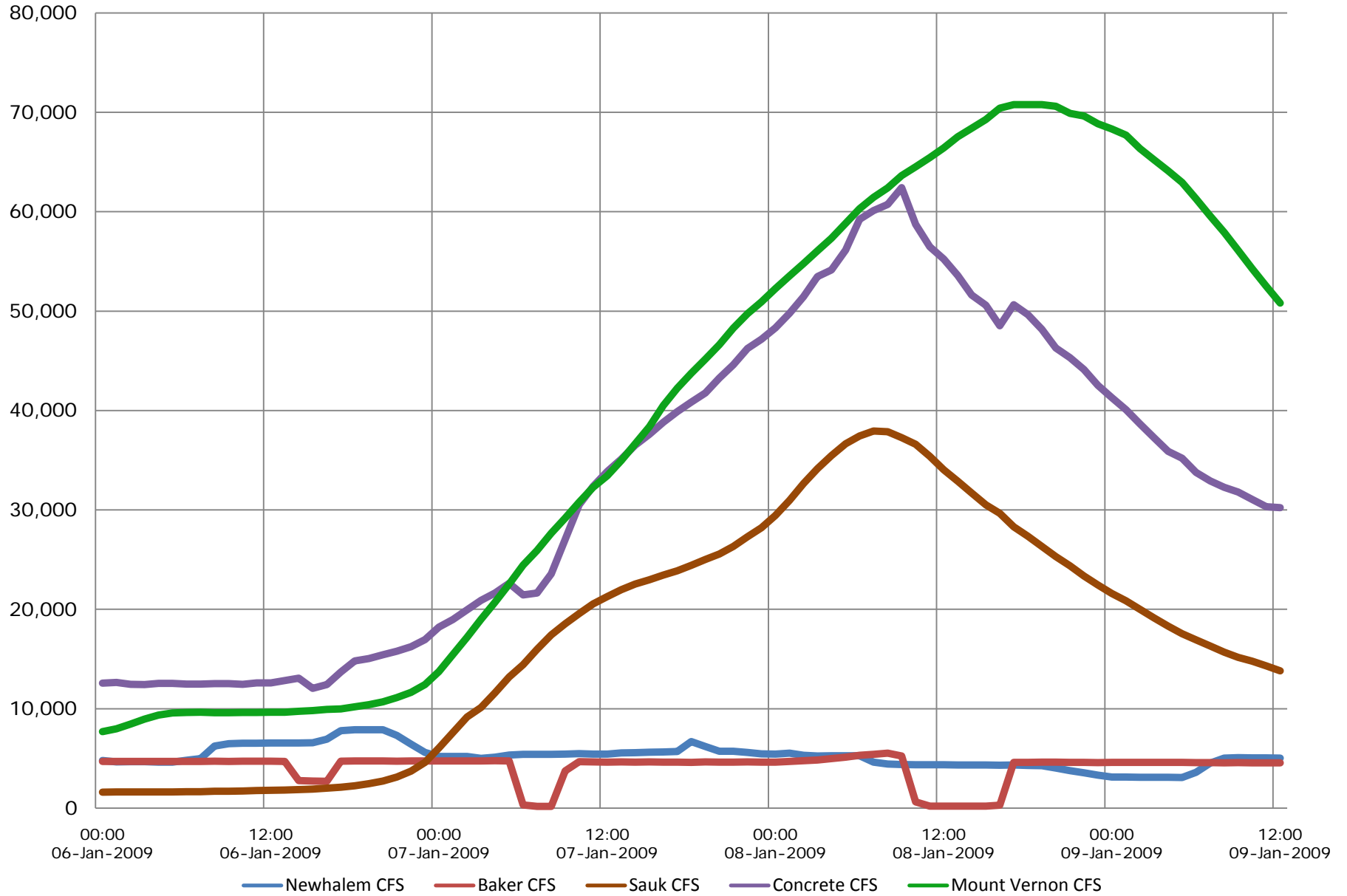


January 8, 2009 Flood Big Picture



BIG PICTURE FOR JANUARY 8, 2009 FLOOD

Date	Time	Ross	Newhalem	Upper Baker	Lower Baker	Baker River	Sauk River		Concrete		Mount Vernon	
		Lake/Forebay Elev.	Flow (CFS)	Lake/Forebay Elev.	Lake/Forebay Elev.	Flow (CFS)	Elev.	Flow (CFS)	Elev.	Flow (CFS)	Elev.	Flow (CFS)
06-Jan-2009	00:00	1,574.310	4,802	703.200	421.380	4,694	3.350	1,607	17.350	12,588	14.020	7,693
06-Jan-2009	01:00	1,574.320	4,665	703.160	421.290	4,712	3.360	1,621	17.370	12,650	14.180	7,982
06-Jan-2009	02:00	1,574.310	4,684	703.060	421.340	4,712	3.360	1,621	17.310	12,463	14.430	8,447
06-Jan-2009	03:00	1,574.320	4,684	702.970	421.320	4,712	3.360	1,621	17.300	12,432	14.690	8,948
06-Jan-2009	04:00	1,574.320	4,626	702.870	421.320	4,712	3.370	1,635	17.340	12,556	14.890	9,347
06-Jan-2009	05:00	1,574.330	4,626	702.770	421.330	4,712	3.370	1,635	17.340	12,556	15.000	9,571
06-Jan-2009	06:00	1,574.280	4,822	702.680		4,712	3.380	1,649	17.320	12,494	15.030	9,632
06-Jan-2009	07:00	1,574.280	4,985	702.620		4,712	3.390	1,663	17.320	12,494	15.040	9,653
06-Jan-2009	08:00	1,574.250	6,246	702.540		4,729	3.410	1,691	17.330	12,525	15.010	9,591
06-Jan-2009	09:00	1,574.210	6,484	702.470		4,712	3.420	1,705	17.330	12,525	15.010	9,591
06-Jan-2009	10:00	1,574.170	6,532	702.380		4,729	3.440	1,733	17.310	12,463	15.020	9,612
06-Jan-2009	11:00	1,574.110	6,532	702.290		4,729	3.460	1,762	17.360	12,619	15.020	9,612
06-Jan-2009	12:00	1,574.080	6,556	702.210		4,729	3.480	1,791	17.360	12,619	15.040	9,653
06-Jan-2009	13:00	1,574.030	6,556	702.150		4,712	3.500	1,820	17.430	12,839	15.040	9,653
06-Jan-2009	14:00	1,574.010	6,556	702.100		2,769	3.530	1,865	17.510	13,093	15.080	9,736
06-Jan-2009	15:00	1,574.010	6,580	702.060		2,726	3.570	1,925	17.180	12,061	15.120	9,819
06-Jan-2009	16:00	1,574.010	6,950	702.050		2,712	3.620	2,001	17.300	12,432	15.170	9,923
06-Jan-2009	17:00	1,574.000	7,797	701.980		4,729	3.690	2,110	17.700	13,705	15.200	9,987
06-Jan-2009	18:00	1,574.000	7,900	701.900		4,747	3.780	2,255	18.040	14,831	15.300	10,199
06-Jan-2009	19:00	1,573.980	7,900	701.840		4,747	3.900	2,455	18.110	15,068	15.400	10,414
06-Jan-2009	20:00	1,573.940	7,900	701.800		4,747	4.060	2,736	18.220	15,443	15.530	10,698
06-Jan-2009	21:00	1,573.950	7,317	701.760	421.890	4,729	4.270	3,128	18.320	15,788	15.720	11,122
06-Jan-2009	22:00	1,573.970	6,436	701.700	422.000	4,764	4.550	3,718	18.450	16,242	15.950	11,649
06-Jan-2009	23:00	1,574.000	5,606	701.620	422.130	4,764	4.870	4,609	18.650	16,951	16.280	12,433
07-Jan-2009	00:00	1,574.050	5,216	701.590	422.260	4,764	5.330	6,058	19.000	18,226	16.800	13,735
07-Jan-2009	01:00	1,574.030	5,195	701.550	422.390	4,747	5.760	7,593	19.200	18,973	17.440	15,455
07-Jan-2009	02:00	1,574.020	5,216	701.520	422.530	4,747	6.160	9,178	19.460	19,964	18.040	17,187
07-Jan-2009	03:00	1,574.050	5,006	701.480	422.690	4,764	6.380	10,114	19.700	20,899	18.630	19,006
07-Jan-2009	04:00	1,574.070	5,131	701.450	422.880	4,782	6.710	11,604	19.890	21,654	19.150	20,709
07-Jan-2009	05:00	1,574.080	5,344	701.440	423.070	4,764	7.040	13,198	20.130	22,624	19.680	22,541
07-Jan-2009	06:00	1,574.110	5,409	701.410	423.400	311	7.280	14,421	19.840	21,454	20.200	24,437
07-Jan-2009	07:00	1,574.110	5,409	701.410	423.860	173	7.570	15,973	19.890	21,654	20.590	25,924
07-Jan-2009	08:00	1,574.130	5,409	701.410	424.320	173	7.830	17,432	20.360	23,571	21.030	27,670
07-Jan-2009	09:00	1,574.140	5,453	701.410	424.660	3,740	8.020	18,539	21.170	27,042	21.400	29,195
07-Jan-2009	10:00	1,574.170	5,496	701.420	424.910	4,677	8.190	19,559	21.940	30,521	21.770	30,773

BIG PICTURE FOR JANUARY 8, 2009 FLOOD

Date	Time	Ross	Newhalem	Upper Baker	Lower Baker	Baker River	Sauk River		Concrete		Mount Vernon	
		Lake/Forebay Elev.	Flow (CFS)	Lake/Forebay Elev.	Lake/Forebay Elev.	Flow (CFS)	Elev.	Flow (CFS)	Elev.	Flow (CFS)	Elev.	Flow (CFS)
07-Jan-2009	11:00	1,574.200	5,453	701.430	425.170	4,659	8.350	20,544	22.340	32,365	22.110	32,270
07-Jan-2009	12:00	1,574.210	5,453	701.480	425.460	4,642	8.490	21,268	22.660	33,869	22.370	33,446
07-Jan-2009	13:00	1,574.240	5,562	701.500	425.720	4,659	8.640	21,963	22.920	35,113	22.700	34,977
07-Jan-2009	14:00	1,574.280	5,584	701.550	425.970	4,642	8.760	22,528	23.210	36,526	23.050	36,650
07-Jan-2009	15:00	1,574.300	5,629	701.610	426.230	4,659	8.850	22,956	23.430	37,615	23.400	38,373
07-Jan-2009	16:00	1,574.320	5,651	701.660	426.520	4,642	8.950	23,436	23.670	38,818	23.820	40,508
07-Jan-2009	17:00	1,574.350	5,695	701.710	426.800	4,642	9.040	23,872	23.880	39,885	24.150	42,238
07-Jan-2009	18:00	1,574.380	6,702	701.800	427.060	4,607	9.150	24,411	24.070	40,843	24.430	43,742
07-Jan-2009	19:00	1,574.420	6,199	701.880	427.350	4,659	9.270	25,006	24.260	41,780	24.690	45,169
07-Jan-2009	20:00	1,574.450	5,718	701.980	427.620	4,642	9.380	25,558	24.560	43,278	24.950	46,626
07-Jan-2009	21:00	1,574.490	5,740	702.080	427.890	4,625	9.530	26,320	24.820	44,593	25.240	48,286
07-Jan-2009	22:00	1,574.530	5,606	702.180	428.210	4,659	9.720	27,302	25.140	46,234	25.490	49,747
07-Jan-2009	23:00	1,574.570	5,474	702.280	428.490	4,642	9.890	28,195	25.320	47,167	25.690	50,936
08-Jan-2009	00:00	1,574.610	5,453	702.410	428.770	4,642	10.120	29,427	25.540	48,319	25.910	52,265
08-Jan-2009	01:00	1,574.670	5,540	702.500	429.070	4,712	10.400	30,963	25.820	49,800	26.120	53,554
08-Jan-2009	02:00	1,574.710	5,323	702.620	429.360	4,782	10.700	32,652	26.130	51,462	26.320	54,800
08-Jan-2009	03:00	1,574.770	5,259	702.730	429.630	4,852	10.960	34,153	26.500	53,475	26.520	56,065
08-Jan-2009	04:00	1,574.790	5,280	702.830	429.900	4,994	11.180	35,449	26.620	54,134	26.720	57,348
08-Jan-2009	05:00	1,574.840	5,280	702.920	430.170	5,138	11.380	36,648	26.980	56,132	26.950	58,847
08-Jan-2009	06:00	1,574.860	5,280	703.040	430.400	5,319	11.510	37,439	27.530	59,242	27.170	60,304
08-Jan-2009	07:00	1,574.910	4,626	703.110	430.630	5,411	11.590	37,930	27.680	60,102	27.340	61,445
08-Jan-2009	08:00	1,574.920	4,434	703.150	430.830	5,540	11.580	37,868	27.790	60,735	27.480	62,396
08-Jan-2009	09:00	1,574.950	4,396	703.240	431.020	5,264	11.480	37,256	28.080	62,420	27.660	63,632
08-Jan-2009	10:00	1,574.990	4,378	703.290	431.350	618	11.370	36,588	27.440	58,728	27.790	64,534
08-Jan-2009	11:00	1,575.020	4,378	703.350	431.720	188	11.170	35,390	27.040	56,468	27.920	65,444
08-Jan-2009	12:00	1,575.040	4,359	703.370	432.120	188	10.940	34,036	26.820	55,240	28.050	66,434
08-Jan-2009	13:00	1,575.070	4,340	703.420	432.480	188	10.740	32,881	26.520	53,584	28.180	67,548
08-Jan-2009	14:00	1,575.090	4,340	703.460	432.860	188	10.530	31,690	26.160	51,624	28.280	68,413
08-Jan-2009	15:00	1,575.120	4,340	703.480	433.220	188	10.320	30,520	25.970	50,602	28.380	69,284
08-Jan-2009	16:00	1,575.130	4,321	703.530	433.560	281	10.160	29,644	25.580	48,529	28.510	70,429
08-Jan-2009	17:00	1,575.160	4,340	703.620	433.590	4,607	9.910	28,301	25.980	50,655	28.550	70,783
08-Jan-2009	18:00	1,575.150	4,303	703.760	433.550	4,607	9.730	27,354	25.790	49,641	28.550	70,783
08-Jan-2009	19:00	1,575.170	4,266	703.880	433.510	4,642	9.530	26,320	25.510	48,161	28.550	70,783
08-Jan-2009	20:00	1,575.190	4,029	704.000	433.480	4,625	9.330	25,307	25.150	46,285	28.530	70,606
08-Jan-2009	21:00	1,575.190	3,782	704.130	433.420	4,607	9.140	24,362	24.960	45,308	28.450	69,899

BIG PICTURE FOR JANUARY 8, 2009 FLOOD

Date	Time	Ross	Newhalem	Upper Baker	Lower Baker	Baker River	Sauk River		Concrete		Mount Vernon	
		Lake/Forebay Elev.	Flow (CFS)	Lake/Forebay Elev.	Lake/Forebay Elev.	Flow (CFS)	Elev.	Flow (CFS)	Elev.	Flow (CFS)	Elev.	Flow (CFS)
08-Jan-2009	22:00	1,575.240	3,561	704.230	433.360	4,607	8.930	23,339	24.730	44,136	28.420	69,635
08-Jan-2009	23:00	1,575.230	3,318	704.310	433.290	4,590	8.740	22,433	24.410	42,526	28.330	68,848
09- Jan- 2009	00:00	1,575.250	3,133	704.400	433.220	4,607	8.560	21,591	24.160	41,286	28.270	68,326
09-Jan-2009	01:00	1,575.260	3,133	704.480	433.160	4,607	8.400	20,856	23.920	40,089	28.200	67,720
09-Jan-2009	02:00	1,575.280	3,107	704.570	433.080	4,607	8.260	19,987	23.640	38,667	28.040	66,349
09-Jan-2009	03:00	1,575.290	3,094	704.650	432.980	4,607	8.120	19,136	23.360	37,267	27.890	65,233
09-Jan-2009	04:00	1,575.310	3,094	704.740	432.890	4,607	7.980	18,303	23.080	35,889	27.730	64,116
09-Jan-2009	05:00	1,575.320	3,081	704.800	432.810	4,607	7.850	17,547	22.940	35,210	27.560	62,943
09-Jan-2009	06:00	1,575.330	3,608	704.840	432.820	4,590	7.740	16,920	22.640	33,775	27.320	61,310
09-Jan-2009	07:00	1,575.350	4,529	704.880	432.810	4,590	7.630	16,304	22.460	32,926	27.060	59,573
09-Jan-2009	08:00	1,575.340	5,027	704.890	432.810	4,573	7.520	15,700	22.320	32,272	26.810	57,932
09-Jan-2009	09:00	1,575.320	5,090	704.890	432.800	4,590	7.420	15,161	22.220	31,809	26.530	56,128
09-Jan-2009	10:00	1,575.300	5,069	704.900	432.780	4,573	7.350	14,789	22.060	31,074	26.240	54,299
09-Jan-2009	11:00	1,575.290	5,069	704.920	432.790	4,573	7.260	14,317	21.900	30,336	25.950	52,509
09-Jan-2009	12:00	1,575.300	5,048	704.920	432.760	4,573	7.160	13,803	21.880	30,243	25.670	50,816

Sources as % of CFS Into Concrete for 2009- 01- 08 Flood

Date	Time	Newhalem	% of Concrete Flow	Baker	% of Concrete Flow	Sauk	% of Concrete Flow	Concrete
		Flow (CFS)		River Flow (CFS)		River Flow (CFS)		
06- Jan- 2009	00:00	4,802	38.15%	4,694	37.29%	1,607	12.77%	12,588
06-Jan-2009	01:00	4,665	36.88%	4,712	37.25%	1,621	12.81%	12,650
06-Jan-2009	02:00	4,684	37.58%	4,712	37.81%	1,621	13.01%	12,463
06-Jan-2009	03:00	4,684	37.68%	4,712	37.90%	1,621	13.04%	12,432
06-Jan-2009	04:00	4,626	36.84%	4,712	37.53%	1,635	13.02%	12,556
06-Jan-2009	05:00	4,626	36.84%	4,712	37.53%	1,635	13.02%	12,556
06-Jan-2009	06:00	4,822	38.59%	4,712	37.71%	1,649	13.20%	12,494
06-Jan-2009	07:00	4,985	39.90%	4,712	37.71%	1,663	13.31%	12,494
06-Jan-2009	08:00	6,246	49.87%	4,729	37.76%	1,691	13.50%	12,525
06-Jan-2009	09:00	6,484	51.77%	4,712	37.62%	1,705	13.61%	12,525
06-Jan-2009	10:00	6,532	52.41%	4,729	37.94%	1,733	13.91%	12,463
06-Jan-2009	11:00	6,532	51.76%	4,729	37.48%	1,762	13.96%	12,619
06-Jan-2009	12:00	6,556	51.95%	4,729	37.48%	1,791	14.19%	12,619
06-Jan-2009	13:00	6,556	51.06%	4,712	36.70%	1,820	14.18%	12,839
06-Jan-2009	14:00	6,556	50.07%	2,769	21.15%	1,865	14.24%	13,093
06-Jan-2009	15:00	6,580	54.56%	2,726	22.60%	1,925	15.96%	12,061
06-Jan-2009	16:00	6,950	55.90%	2,712	21.81%	2,001	16.10%	12,432
06-Jan-2009	17:00	7,797	56.89%	4,729	34.51%	2,110	15.40%	13,705
06-Jan-2009	18:00	7,900	53.27%	4,747	32.01%	2,255	15.20%	14,831
06-Jan-2009	19:00	7,900	52.43%	4,747	31.50%	2,455	16.29%	15,068
06-Jan-2009	20:00	7,900	51.16%	4,747	30.74%	2,736	17.72%	15,443
06-Jan-2009	21:00	7,317	46.35%	4,729	29.95%	3,128	19.81%	15,788
06-Jan-2009	22:00	6,436	39.63%	4,764	29.33%	3,718	22.89%	16,242
06-Jan-2009	23:00	5,606	33.07%	4,764	28.10%	4,609	27.19%	16,951
07- Jan- 2009	00:00	5,216	28.62%	4,764	26.14%	6,058	33.24%	18,226
07-Jan-2009	01:00	5,195	27.38%	4,747	25.02%	7,593	40.02%	18,973
07-Jan-2009	02:00	5,216	26.13%	4,747	23.78%	9,178	45.97%	19,964
07-Jan-2009	03:00	5,006	23.95%	4,764	22.80%	10,114	48.39%	20,899
07-Jan-2009	04:00	5,131	23.70%	4,782	22.08%	11,604	53.59%	21,654
07-Jan-2009	05:00	5,344	23.62%	4,764	21.06%	13,198	58.34%	22,624
07-Jan-2009	06:00	5,409	25.21%	311	1.45%	14,421	67.22%	21,454
07-Jan-2009	07:00	5,409	24.98%	173	0.80%	15,973	73.76%	21,654
07-Jan-2009	08:00	5,409	22.95%	173	0.73%	17,432	73.96%	23,571
07-Jan-2009	09:00	5,453	20.16%	3,740	13.83%	18,539	68.56%	27,042
07-Jan-2009	10:00	5,496	18.01%	4,677	15.32%	19,559	64.08%	30,521
07-Jan-2009	11:00	5,453	16.85%	4,659	14.40%	20,544	63.48%	32,365
07-Jan-2009	12:00	5,453	16.10%	4,642	13.71%	21,268	62.79%	33,869
07-Jan-2009	13:00	5,562	15.84%	4,659	13.27%	21,963	62.55%	35,113
07-Jan-2009	14:00	5,584	15.29%	4,642	12.71%	22,528	61.68%	36,526
07-Jan-2009	15:00	5,629	14.96%	4,659	12.39%	22,956	61.03%	37,615
07-Jan-2009	16:00	5,651	14.56%	4,642	11.96%	23,436	60.37%	38,818
07-Jan-2009	17:00	5,695	14.28%	4,642	11.64%	23,872	59.85%	39,885
07-Jan-2009	18:00	6,702	16.41%	4,607	11.28%	24,411	59.77%	40,843
07-Jan-2009	19:00	6,199	14.84%	4,659	11.15%	25,006	59.85%	41,780
07-Jan-2009	20:00	5,718	13.21%	4,642	10.73%	25,558	59.06%	43,278
07-Jan-2009	21:00	5,740	12.87%	4,625	10.37%	26,320	59.02%	44,593
07-Jan-2009	22:00	5,606	12.13%	4,659	10.08%	27,302	59.05%	46,234
07-Jan-2009	23:00	5,474	11.61%	4,642	9.84%	28,195	59.78%	47,167
08- Jan- 2009	00:00	5,453	11.29%	4,642	9.61%	29,427	60.90%	48,319

Sources as % of CFS Into Concrete for 2009- 01- 08 Flood

Date	Time	Newhalem	% of Concrete Flow	Baker	% of Concrete Flow	Sauk	% of Concrete Flow	Concrete
		Flow (CFS)		River Flow (CFS)		River Flow (CFS)		
08-Jan-2009	01:00	5,540	11.12%	4,712	9.46%	30,963	62.17%	49,800
08-Jan-2009	02:00	5,323	10.34%	4,782	9.29%	32,652	63.45%	51,462
08-Jan-2009	03:00	5,259	9.83%	4,852	9.07%	34,153	63.87%	53,475
08-Jan-2009	04:00	5,280	9.75%	4,994	9.23%	35,449	65.48%	54,134
08-Jan-2009	05:00	5,280	9.41%	5,138	9.15%	36,648	65.29%	56,132
08-Jan-2009	06:00	5,280	8.91%	5,319	8.98%	37,439	63.20%	59,242
08-Jan-2009	07:00	4,626	7.70%	5,411	9.00%	37,930	63.11%	60,102
08-Jan-2009	08:00	4,434	7.30%	5,540	9.12%	37,868	62.35%	60,735
08-Jan-2009	09:00	4,396	7.04%	5,264	8.43%	37,256	59.69%	62,420
08-Jan-2009	10:00	4,378	7.45%	618	1.05%	36,588	62.30%	58,728
08-Jan-2009	11:00	4,378	7.75%	188	0.33%	35,390	62.67%	56,468
08-Jan-2009	12:00	4,359	7.89%	188	0.34%	34,036	61.61%	55,240
08-Jan-2009	13:00	4,340	8.10%	188	0.35%	32,881	61.36%	53,584
08-Jan-2009	14:00	4,340	8.41%	188	0.36%	31,690	61.39%	51,624
08-Jan-2009	15:00	4,340	8.58%	188	0.37%	30,520	60.31%	50,602
08-Jan-2009	16:00	4,321	8.90%	281	0.58%	29,644	61.09%	48,529
08-Jan-2009	17:00	4,340	8.57%	4,607	9.09%	28,301	55.87%	50,655
08-Jan-2009	18:00	4,303	8.67%	4,607	9.28%	27,354	55.10%	49,641
08-Jan-2009	19:00	4,266	8.86%	4,642	9.64%	26,320	54.65%	48,161
08-Jan-2009	20:00	4,029	8.70%	4,625	9.99%	25,307	54.68%	46,285
08-Jan-2009	21:00	3,782	8.35%	4,607	10.17%	24,362	53.77%	45,308
08-Jan-2009	22:00	3,561	8.07%	4,607	10.44%	23,339	52.88%	44,136
08-Jan-2009	23:00	3,318	7.80%	4,590	10.79%	22,433	52.75%	42,526
09-Jan-2009	00:00	3,133	7.59%	4,607	11.16%	21,591	52.30%	41,286
09-Jan-2009	01:00	3,133	7.82%	4,607	11.49%	20,856	52.02%	40,089
09-Jan-2009	02:00	3,107	8.04%	4,607	11.91%	19,987	51.69%	38,667
09-Jan-2009	03:00	3,094	8.30%	4,607	12.36%	19,136	51.35%	37,267
09-Jan-2009	04:00	3,094	8.62%	4,607	12.84%	18,303	51.00%	35,889
09-Jan-2009	05:00	3,081	8.75%	4,607	13.08%	17,547	49.84%	35,210
09-Jan-2009	06:00	3,608	10.68%	4,590	13.59%	16,920	50.10%	33,775
09-Jan-2009	07:00	4,529	13.76%	4,590	13.94%	16,304	49.52%	32,926
09-Jan-2009	08:00	5,027	15.58%	4,573	14.17%	15,700	48.65%	32,272
09-Jan-2009	09:00	5,090	16.00%	4,590	14.43%	15,161	47.66%	31,809
09-Jan-2009	10:00	5,069	16.31%	4,573	14.72%	14,789	47.59%	31,074
09-Jan-2009	11:00	5,069	16.71%	4,573	15.07%	14,317	47.19%	30,336
09-Jan-2009	12:00	5,048	16.69%	4,573	15.12%	13,803	45.64%	30,243

January 8, 2009 Flood

Sources of CFS as % of CFS at Concrete (The Dalles)

